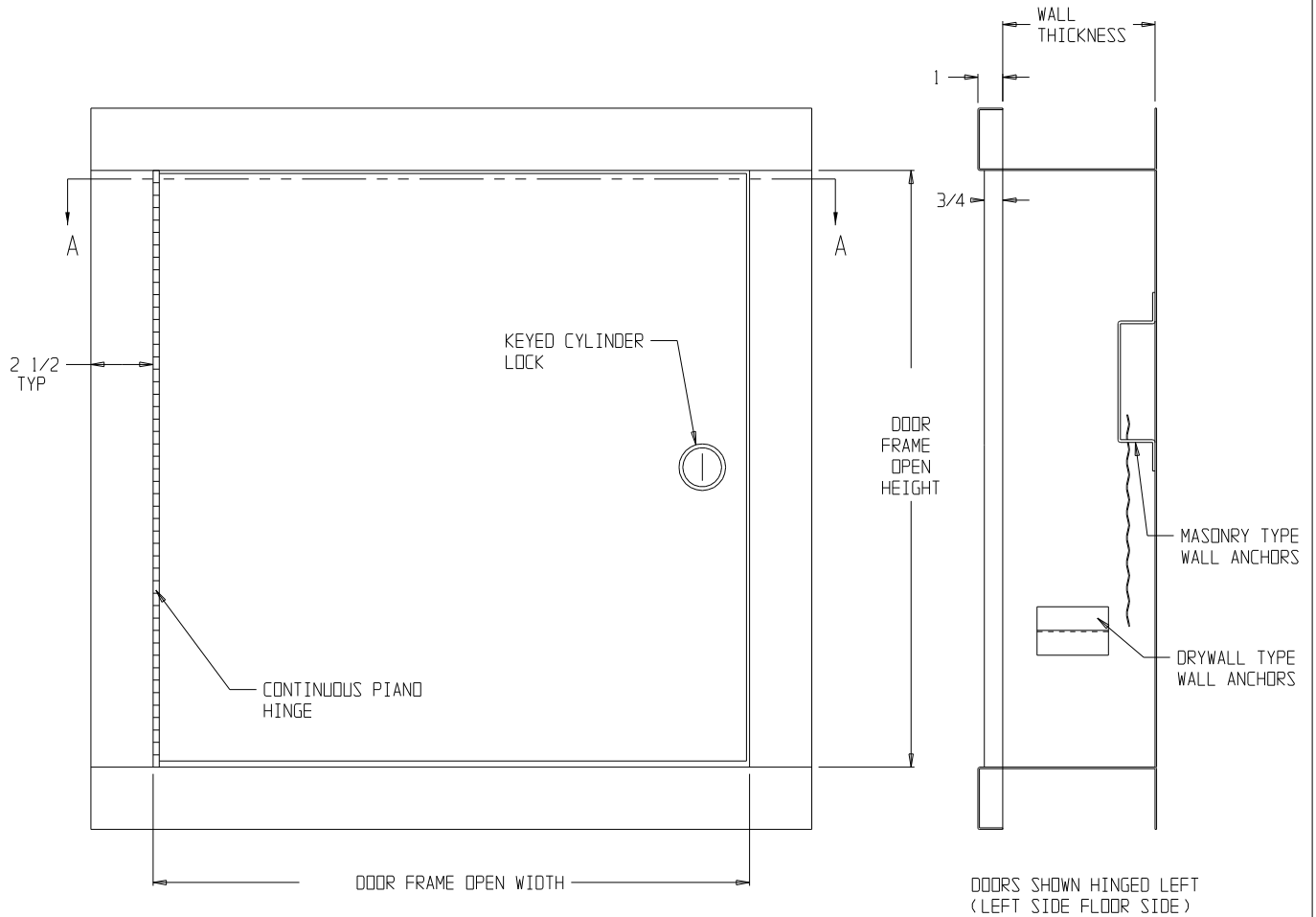
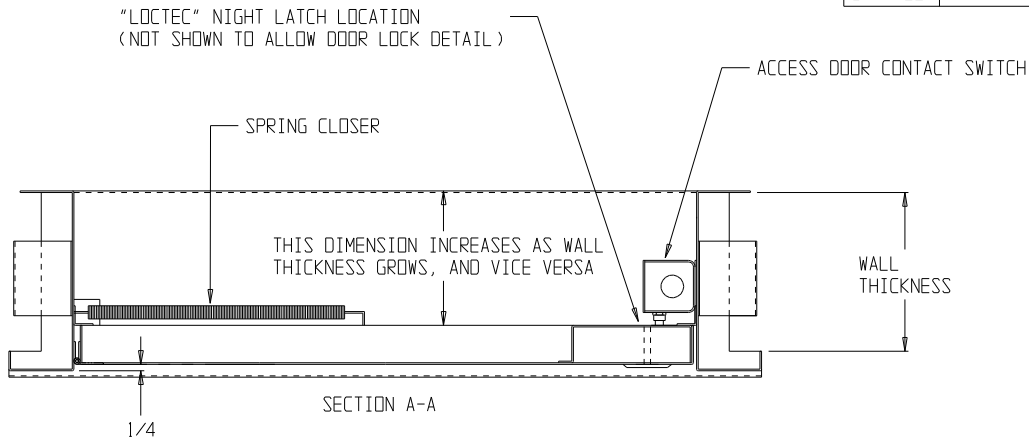


WALL CONSTRUCTION	
DRYWALL	MASONRY



MATERIAL: 16 GA. STAINLESS - #4 FINISH OR 16 GA. PRIMED PLAIN STEEL

CUSTOMER	SHIP TO	SYM.	DATE	REVISIONS DESCRIPTION	BY

JOB NAME: TITLE: DUMBWAITER UL "B" LABELED SWING MACHINE ACCESS DOOR WITH SAFETY CONTACT SWITCH LEVEL 3
2/8/06

L.O. BY	DATE REQ
APPROVED	PAINT
DATE L.O.	SHEET OF
SCALE 3/16" = 1"	# REQ'D

Kafka Manufacturing Co.
7600 Industrial Dr. Forest Park, IL 60130
Phone: (708) 771-0970 Fax: (708) 771-0108

-B-	DWG NO. 1000-711	JOB NO.
JJP		