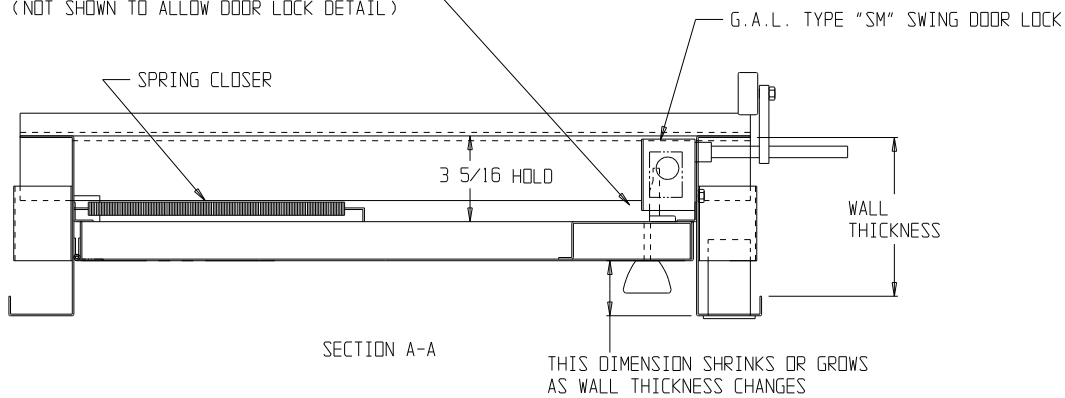


BUTTON VOLTAGE
24 V. A. C.

ARRIVAL LIGHT
24 V. A. C.

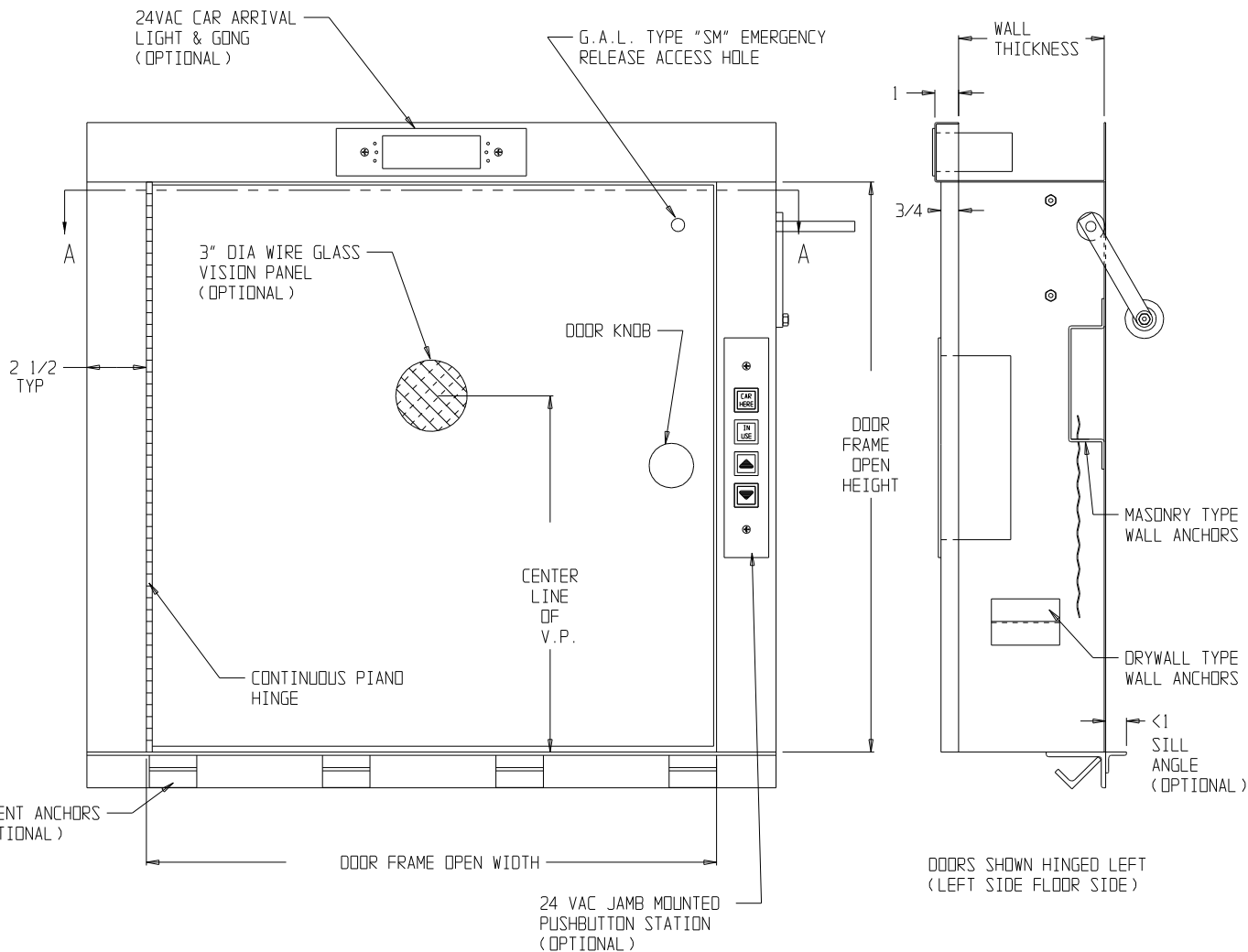
WALL CONSTRUCTION
DRYWALL | MASONRY

"LOCTEC" NIGHT LATCH LOCATION
(NOT SHOWN TO ALLOW DOOR LOCK DETAIL)



24VAC CAR ARRIVAL
LIGHT & GONG
(OPTIONAL)

G.A.L. TYPE "SM" EMERGENCY
RELEASE ACCESS HOLE



EQUATIONS

CENTERLINE OF V.P.

<18 FRAME OPEN WIDTH=DOOR FRAME HEIGHT-9
>18 FRAME OPEN WITH=OPTIONAL HEIGHT

MATERIAL: 16 GA. STAINLESS - #4 FINISH OR 16 GA. PRIMED PLAIN STEEL

CUSTOMER	SHIP TO	SYM.	DATE	REVISIONS	
				DESCRIPTION	BY

JOB NAME: TITLE: DUMBWAITER UL "B" LABELED SWING FLOOR LOADING DOOR WITH G.A.L. TYPE "SM" DOOR LOCK LEVEL 2
INSIDE FRAME-FOR USE WITH ≥ 1/4" WALL THICKNESS & <1" OPTIONAL SILL ANGLE 8/9/05

L.O. BY	DATE REQ
APPROVED	PAINT
DATE L.O.	SHEET OF
SCALE 3/16" = 1"	# REQ'D

Kafka Manufacturing Co.
7600 Industrial Dr. Forest Park, Il. 60130
Phone: (708) 771-0970 Fax: (708) 771-0108

-B- DWG NO. 1000-711 JOB NO. JJP