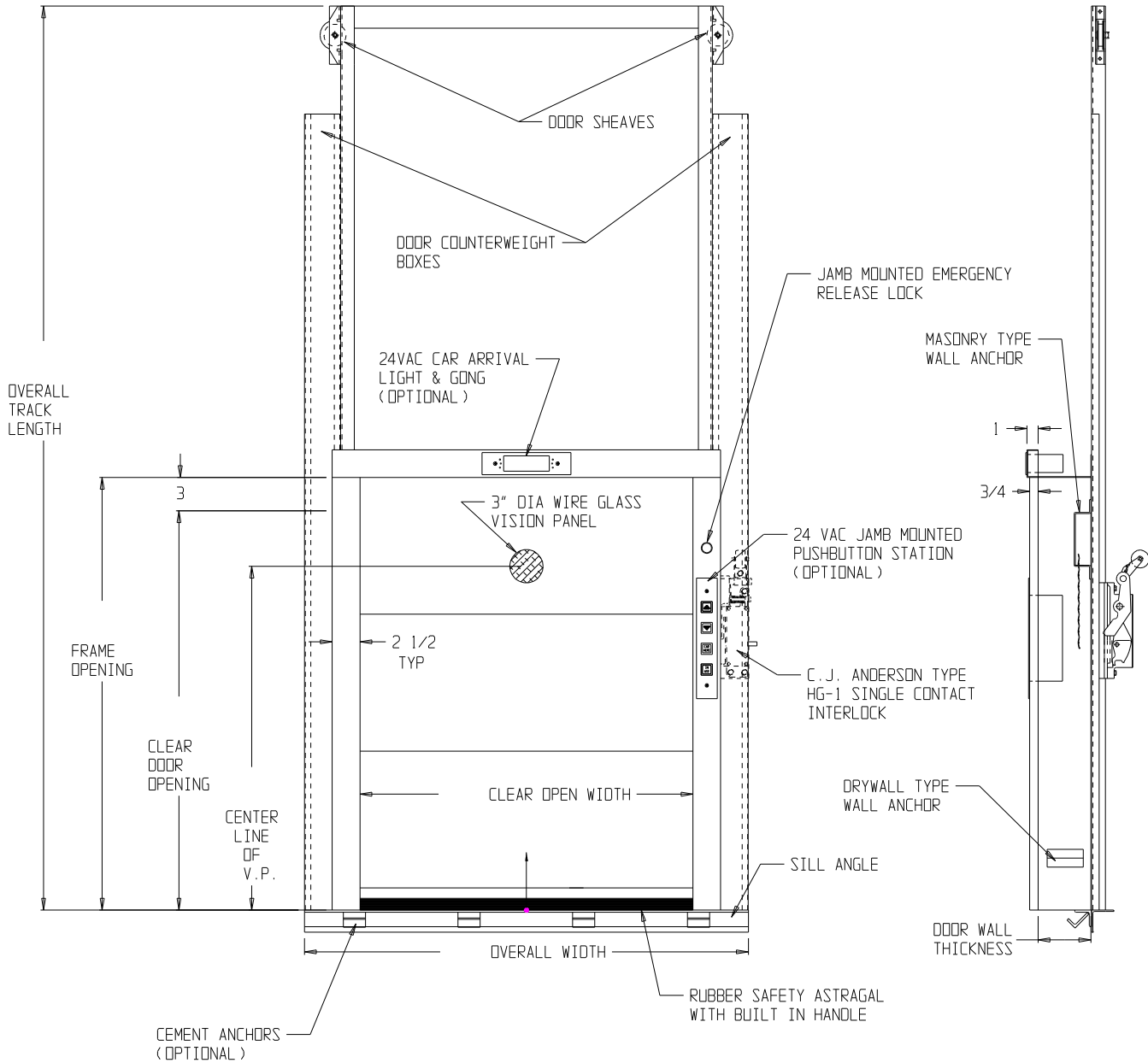


BUTTON VOLTAGE
24 V.A.C.

ARRIVAL LIGHT
24 V.A.C.

WALL CONSTRUCTION
DRYWALL | MASONRY



EQUATIONS

OVERALL TRACK = (2 * COH) + 5 5/8
 OVERALL WIDTH = COW + 10
 CENTERLINE OF V.P. = FRAME OPENING - 8

MATERIAL: 16 GA. STAINLESS STEEL - #4 FINISH OR 16 GA. PRIMED PLAIN STEEL

JOB NAME	CUSTOMER	REVISIONS			
		SYM.	DATE	DESCRIPTION	BY

SHIP TO: TITLE: DUMWAITER UL "B" LABELED SLIDE-UP FLOOR LOADING DOOR LEVEL 1
2/8/06

L.O. BY	DATE REQ
APPROVED	PAINT
DATE L.O.	SHEET OF
SCALE 3/32" = 1"	# REQ'D

Kafka Manufacturing Co.
 7600 Industrial Dr. Forest Park, IL. 60130
 Phone: (708) 771-0970 Fax: (708) 771-0108

-B- DWG NO. 1000-710 JOB NO. JJP