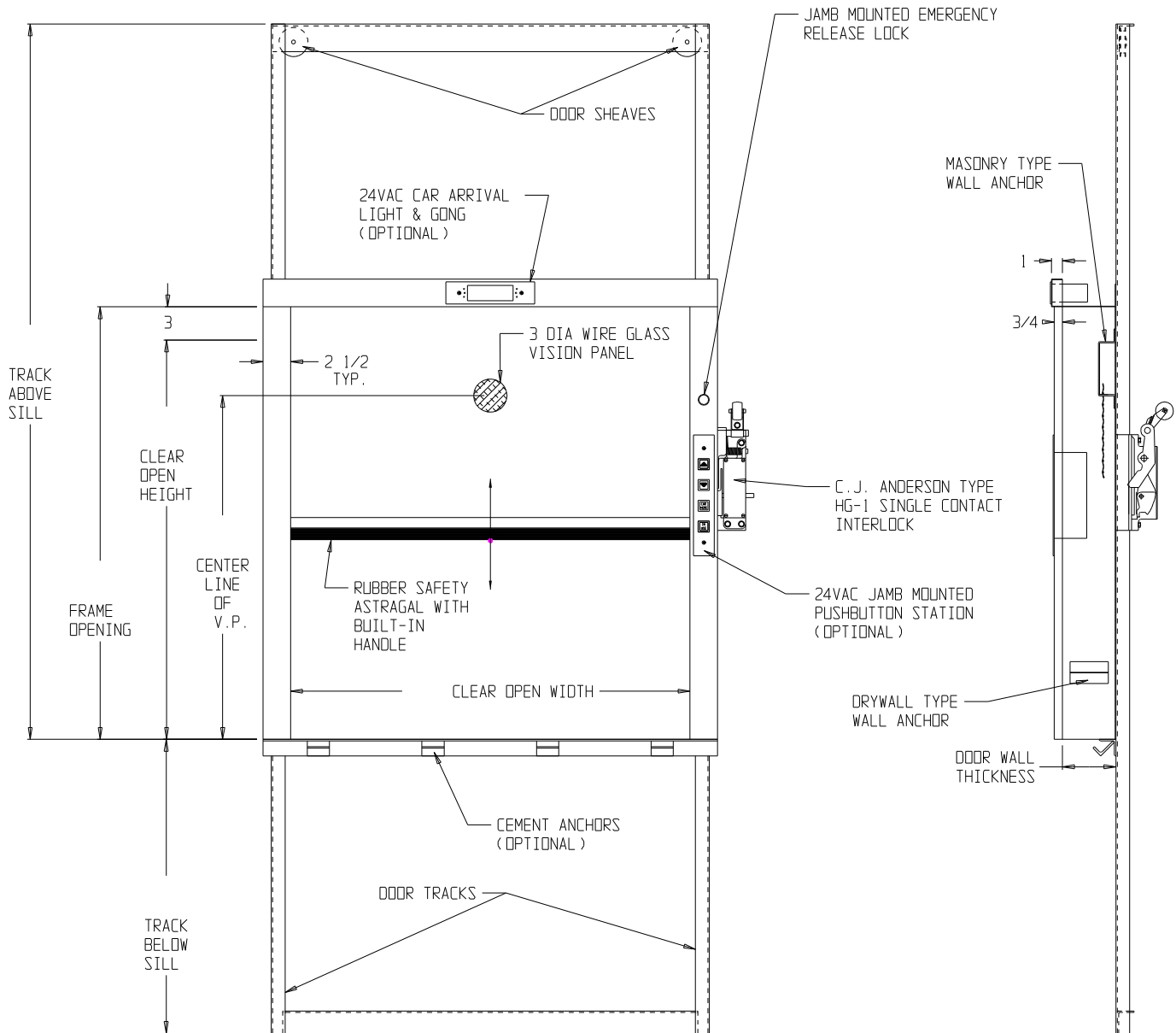


BUTTON VOLTAGE
24 V.A.C.

ARRIVAL LIGHT
24 V.A.C.

WALL CONSTRUCTION
DRYWALL | MASONRY



EQUATIONS

TRACK ABOVE SILL = (COH/2) + COH + 7 1/2
 TRACK BELOW SILL = (COH/2) + 2 1/2
 CENTERLINE OF V.P. = FRAME OPENING - 8

MATERIAL: 16 GA. STAINLESS STEEL - #4 FINISH OR 16 GA. PRIMED PLAIN STEEL

JOB NAME	CUSTOMER	REVISIONS			
		SYM.	DATE	DESCRIPTION	BY

SHIP TO	TITLE: DUMBWAITER UL "B" LABELED BI-PARTING FLOOR LOADING DOOR		LEVEL 2
	L.O. BY	DATE REQ	2/8/06
	APPROVED	PAINT	
	DATE L.O.	SHEET OF	
	SCALE 3/32" = 1"	# REQ'D	

Kafka Manufacturing Co.
 7600 Industrial Dr. Forest Park, IL 60130
 Phone: (708) 771-0970 Fax: (708) 771-0108

-B- DWG NO. 1000-709 JOB NO. JJP