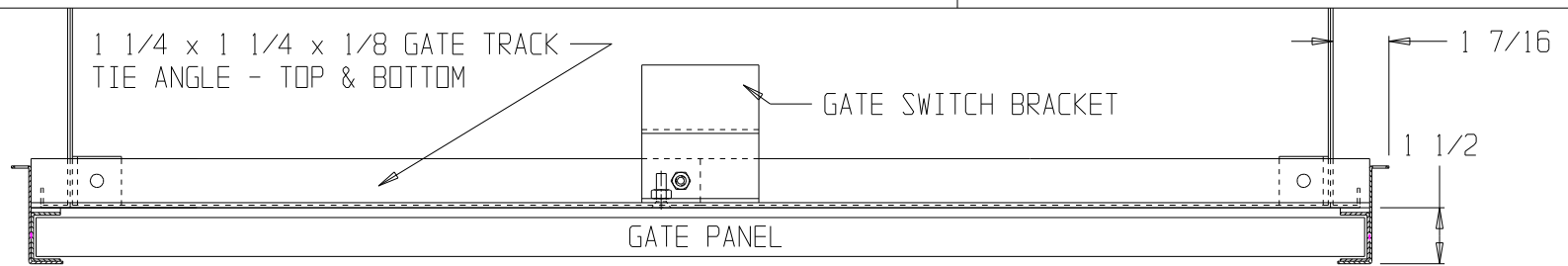


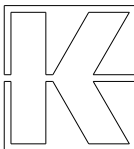
PLAN VIEW AT CAR TOP BEFORE GATE IS MOUNTED



FOR REFERENCE ONLY

PLAN VIEW AT CAR TOP AFTER GATE IS MOUNTED

JOB NAME	CUSTOMER	REVISIONS			
		SYM.	DATE	DESCRIPTION	BY

SHIP TO	TITLE: PLAN VIEW AT CAR TOP OF BI-PARTING CAR GATE FOR INCLINATOR DUMBWAITER		8/24/05
	L.O. BY	DATE REQ	 Kafka Manufacturing Co. 7600 Industrial Dr. Forest Park, IL 60130 Phone: (708) 771-0970 Fax: (708) 771-0108
	APPROVED	PAINT	
	DATE L.O.	SHEET	
	SCALE N.T.S.	# REQ'D	
-A-	DWG NO. 1000-428	JOB NO.	JJP